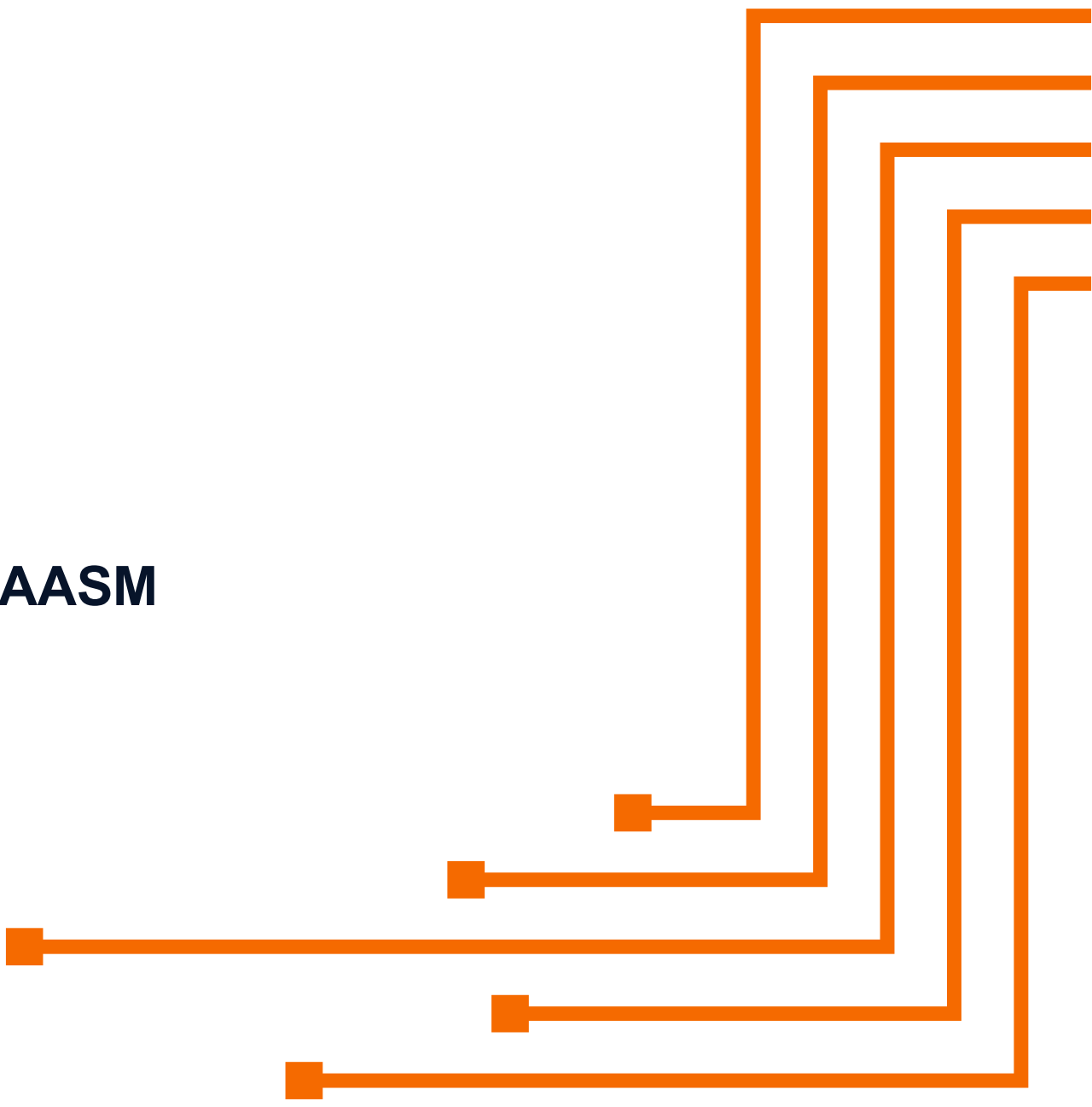




# The Tale of Two ASMs: EASM + CAASM

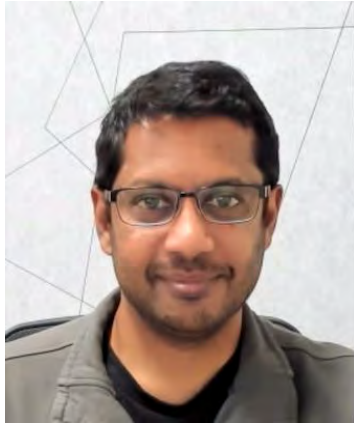
Presented by Vinay Anand and Tom Parker

August 8th, 2024





# Meet the Speakers



**Vinay Anand, CPO**



vinay.anand@netspi.com



<https://www.linkedin.com/in/vinayanand/>



**Tom Parker, CTO**



tom.parker@netspi.com



<https://www.linkedin.com/in/tomparker2/>





# The Most Trusted Products, Services, and Brands Choose NetSPI



20% of the Fortune 500

9/10 Top U.S. Banks

3/5 Largest Global Healthcare Companies

3/3 Largest Cloud Providers

*“NetSPI is exemplary at penetration testing, dynamic application security testing, and breach and attack simulation...”*

Craig Guiliano, Cyber Intelligence Officer, Chubb

## Trusted Pentesting

21K engagements\*



20+ years of testing

## Security Expertise

4M assets tested\*

1.5M vulnerabilities reported\*



Red Team  
Ops 1

## Recognized by:

Gartner

FORRESTER

GIGAOM

\*cumulative as of 2023



# Our Portfolio

## Services

### APPLICATION PENTESTING

Web Application  
Mobile Application  
Thick Application  
Virtual Application  
API

### NETWORK PENTESTING

Internal Network  
External Network  
Wireless Network  
Host-Based  
Mainframe

### CLOUD PENTESTING

AWS  
Azure  
Google Cloud  
Kubernetes

### SOCIAL ENGINEERING

Phishing  
Vishing  
Physical Pentest  
On-Site Assessment

### AI/ML PENTESTING

Large Language Models  
  
**RED TEAM**  
Assumed Breach  
Black Box

### HARDWARE & INTEGRATED SYSTEMS

IoT/OT  
ATM  
Automotive  
Medical Device  
Embedded

### BLOCKCHAIN PENTESTING

Smart Contract Audit  
Infrastructure Test  
Web Application Test

### SECURE CODE REVIEW

SAST & SCR  
SAST Triaging

### SAAS SECURITY ASSESSMENT

Microsoft 365  
Salesforce

### CYBERSECURITY MATURITY ASSESSMENT

Security Program Advisory  
Incident Response  
Benchmarking

### THREAT MODELING

STRIDE, PASTA, & Proprietary Methodologies

## Products

### PTaaS

Pen Testing as a Service

### BAS

Breach & Attack Simulation

### EASM

External Attack Surface Management

### CAASM

Cyber Asset Attack Surface Management

# NetSPI Platform



# Learning Objectives

- 01 Attack surface visibility is challenging
- 02 EASM and CAASM set the foundation for 360-degree asset visibility
- 03 NetSPI focuses on Discovery, Prioritization and Remediation of assets and vulnerabilities
- 04 The NetSPI Platform helps customers operationalize a Proactive Security program.



# Challenge

Organizations are overwhelmed, faced with unknown or immeasurable **risks** due to a lack of **comprehensive visibility** into their ever-evolving **cyber asset landscape** and **security controls posture**.

Resource shortages  
Too Many Vulnerabilities  
Evolving threat landscape  
Rogue Devices  
Evolving regulations  
Contractor systems

BYOD  
Unapproved Applications  
SIEM alert overload  
Cloud visibility issues  
Expanding attack surface  
Lack of Posture Visibility



**Security blind spots**



**Reduced confidence**



**Insecure systems**



**Operator inefficiency**



**Compliance gaps**



**Regulatory risk**

# The Power of



**NetSPI™**

**+**

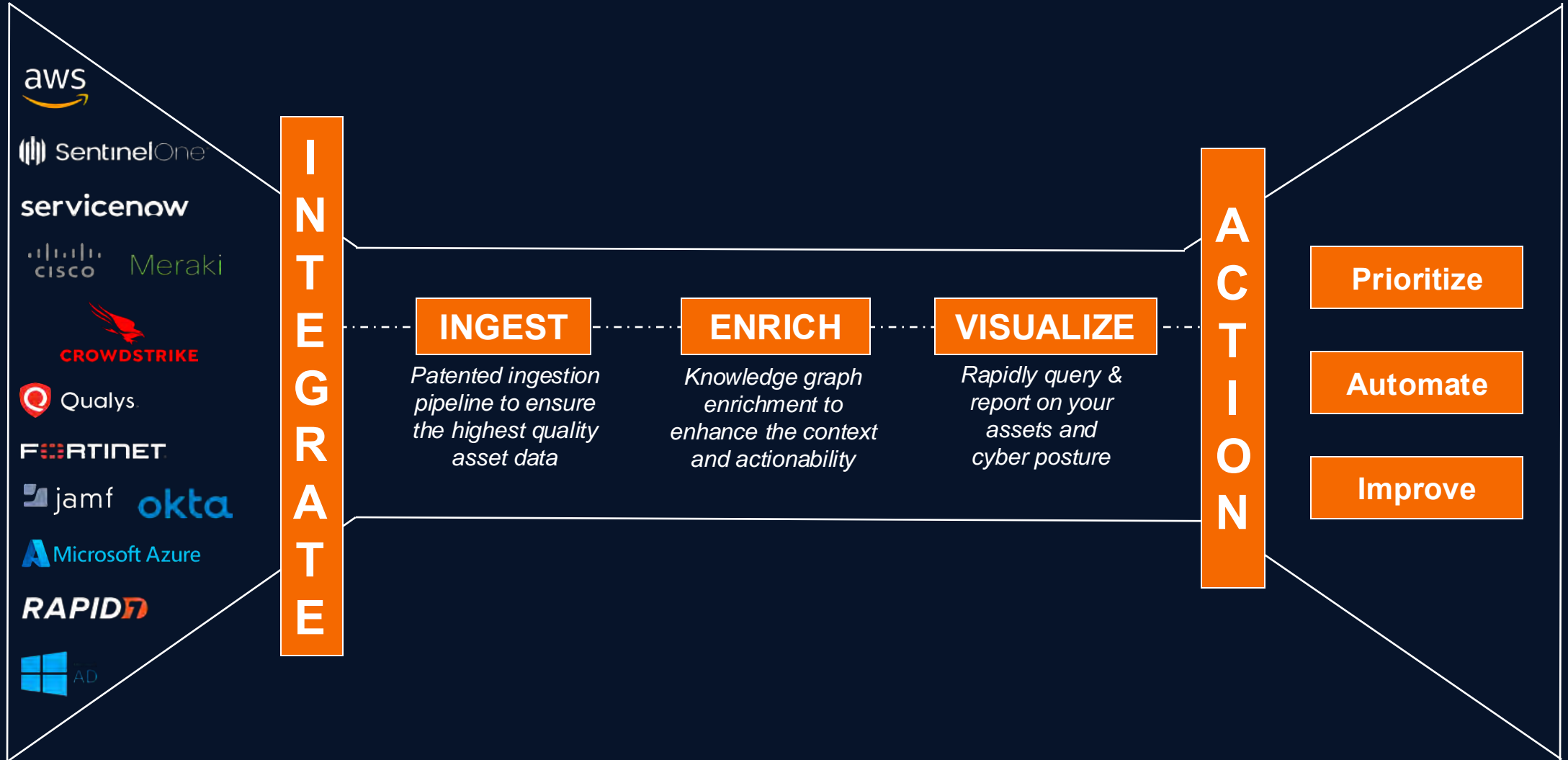


**Hubble**



# NetSPI CAASM

INTEGRATE > OBSERVE > ACT







# Distinguishing Features

1

## Knowledge Graph

Enables an enhanced understanding of all assets, to help operators understand how an asset relates to other systems, users and more.

2

## Infinite Asset Types

Comprehensive and constantly growing inventory of asset types from ICS systems, to mobile devices, cloud resources and applications.

3

## Unlimited Integrations

Fully agentless integrations with your existing technology stack, to ensure an end-to-end view of your assets without installing any new software.

4

## New Level of CAASM

Go beyond basic CAASM products with more holistic asset coverage, context driven asset graphs and unmatched data visualizations and reports.





# CAASM + EASM: 360-degree asset visibility

Combine internal + external ASM

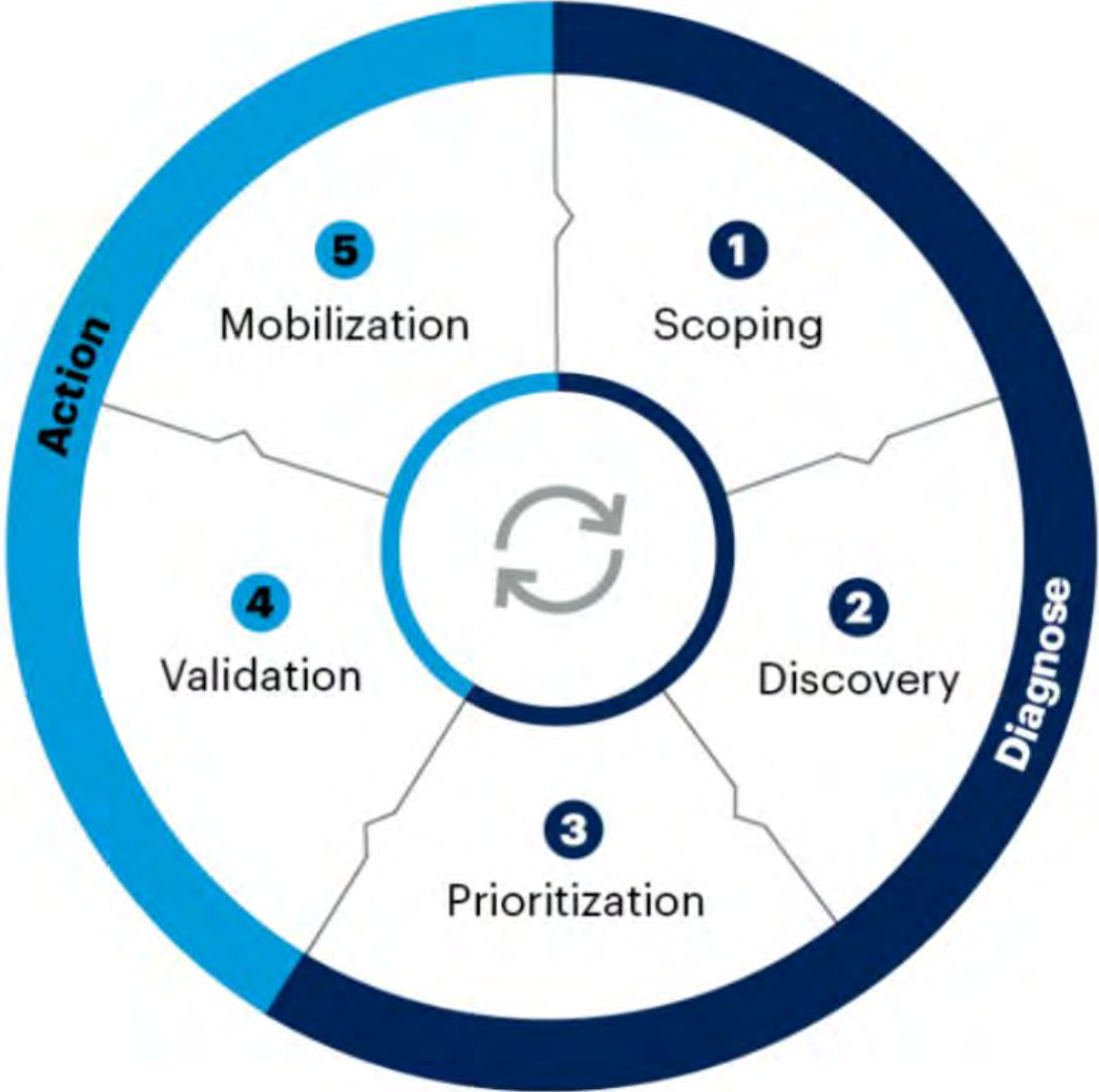
Identify, validate, and prioritize  
potential exposures

Leverage PTaaS, EASM & BAS  
together





# Asset Visibility Drives CTEM



### Triggers (Sample)

- 1** M&A
- 2** New Business Project
- 3** Risk Appetite Changed
- 4** Security Control Upgrade
- 5** Business or Project Staff Change



# The NetSPI Platform Brings it Together

## THE BENEFITS

Unified view of Assets & Vulnerabilities

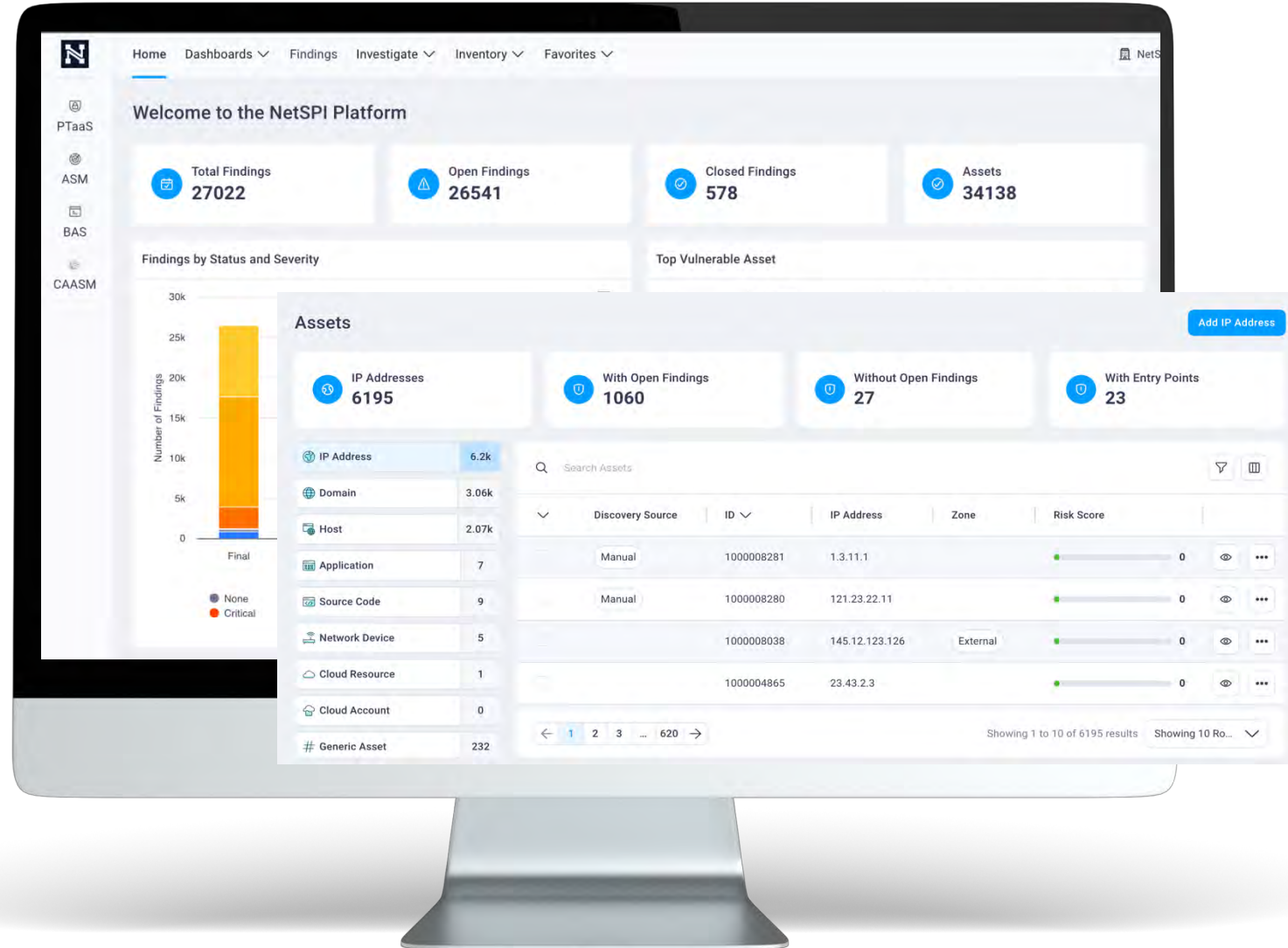
Correlate findings across Modules

Actionable Outcomes

Deep data contextualization

Attack Paths across the entire IT estate

Modular Architecture





# Top Takeaways

**01** Attack surface visibility is challenging

**02** EASM and CAASM set the foundation for 360-degree asset visibility

**03** NetSPI focuses on Discovery, Prioritization and Remediation of assets and vulnerabilities

**04** The NetSPI Platform helps customers operationalize a Proactive Security program.



# Questions?

---

**Vinay Anand**

CPO

vinay.anand@netspi.com

---

241 N 5th Ave Suite 1200  
Minneapolis, MN 55401

[netspi.com](https://www.netspi.com)



**Download Now!**

<https://www.netspi.com/resources/ebooks-and-whitepapers/rein-in-attack-surface-sprawl-with-caasm>



---

**Visit us at Booth #2750!**